



中邮海外仓

CHINA POSTAL WAREHOUSING SERVICE

Safe、 stable、 high-efficient”



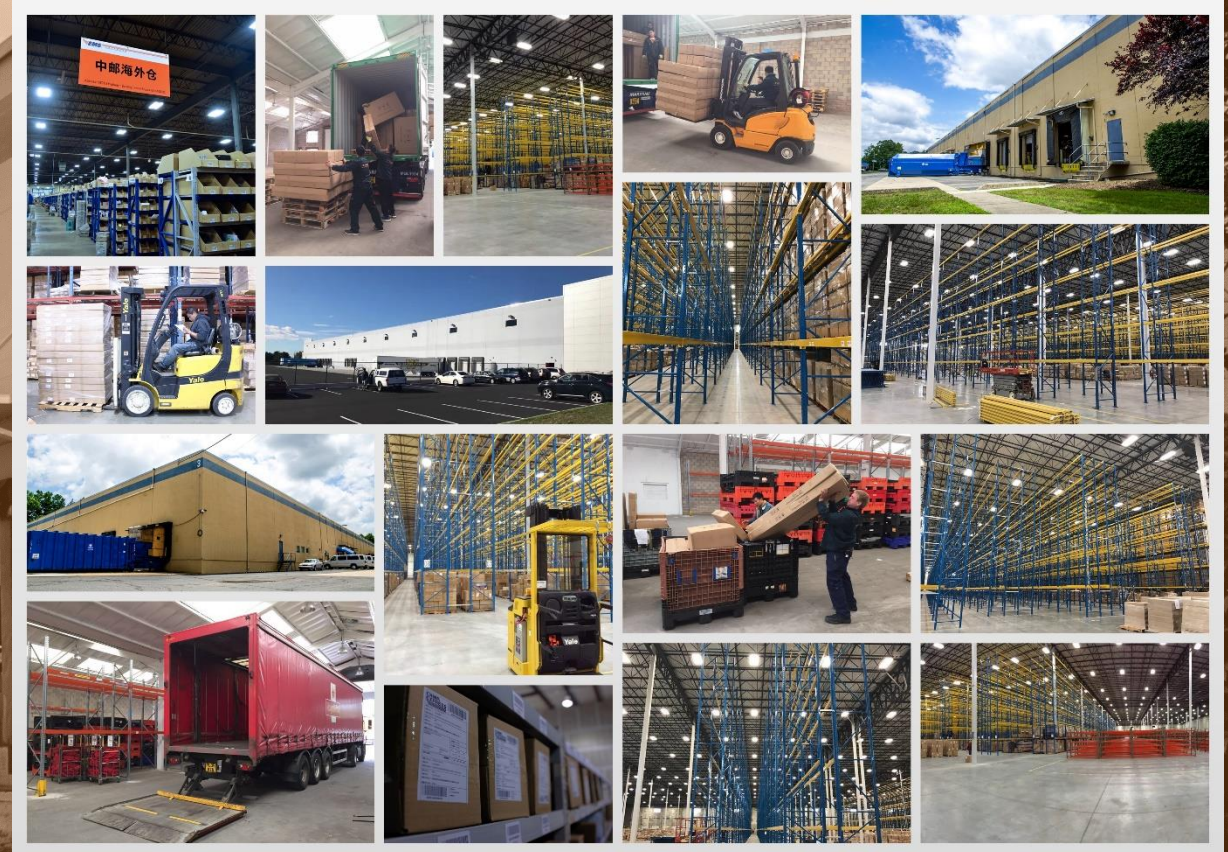
Introduction



About CPWS

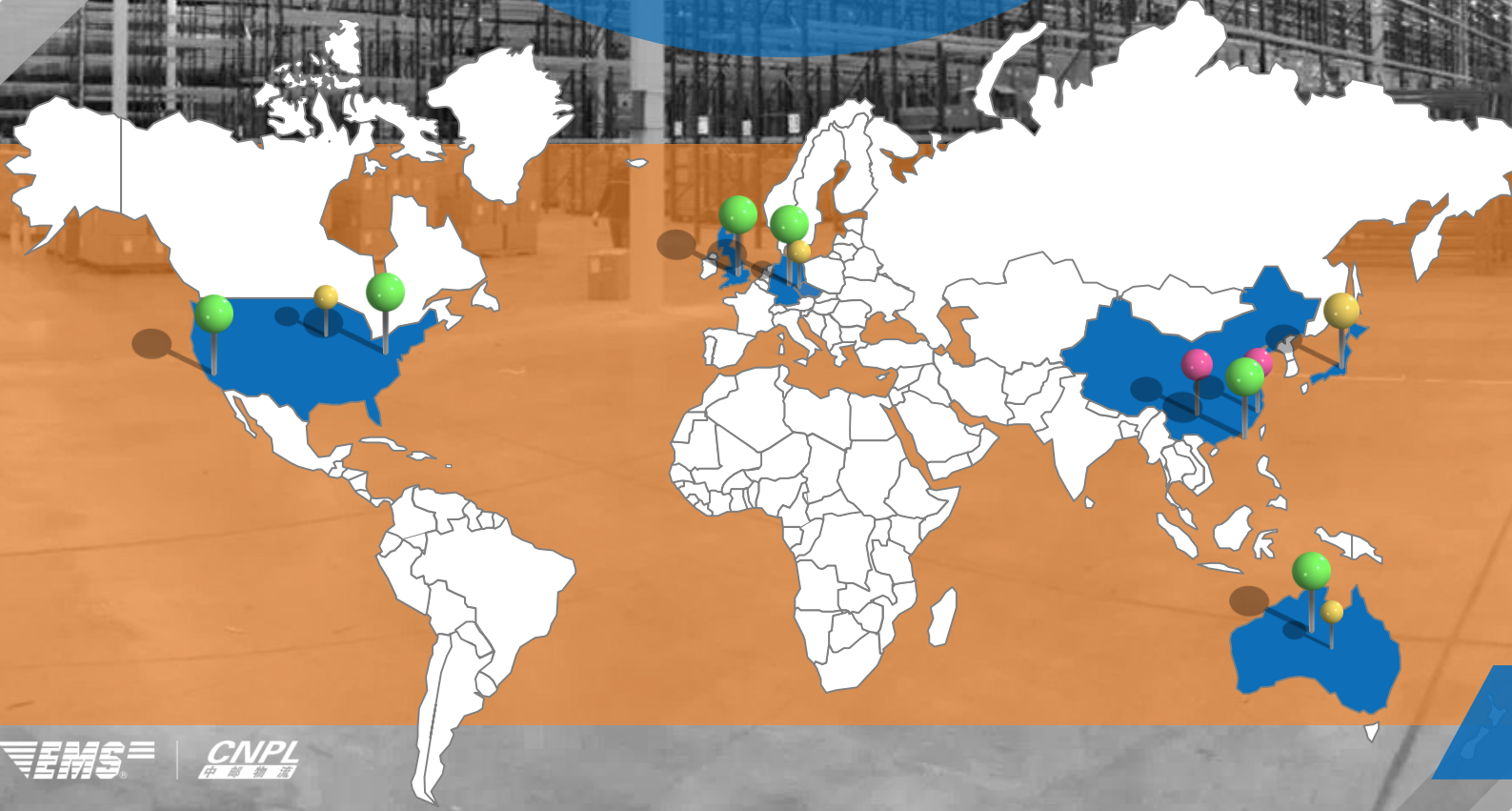
- China Postal Warehousing Service (**CPWS**) is the integrated warehouse service provided by China Postal Express and Logistics Co.,Ltd. The service includes receiving and sending service in domestic warehouse, international shipment, customs clearance, foreign storage, delivery in destination country and individualized value-added service. CPWS is a kind of safe, stable and high-efficient warehousing service that integrates international postal channel resources, professional operation team and information system, which aims to optimize the cross-border e-commerce logistics solutions for our customers.

Pictures of warehouses



4

- Overseas warehouse (Export)
New Jersey/Los Angeles/Birmingham/Frankfurt/Melbourne/Jenec
- Overseas Warehouse (Inport)
Osaka/Delaware/Frankfurt/Hongkong
- Warehouse in China (Transit)
Shenzhen / Chongqing



- 2015.8 ● U.S.A. East Facility, 35000 m², New Jersey
- 2016.1 ● U.S.A. West Facility, 20000 m², Los Angeles
- 2016.4 ● U.K. Facility, 6000 m², Birmingham
- 2016.5 ● Germany Facility, 2000 m², Frankfurt
- 2016.5 ● Australia Facility, 2000 m², Melbourne
- 2017.8 ● Czech Republic Facility, 5000 m², Jenec

■ Global warehouse resource

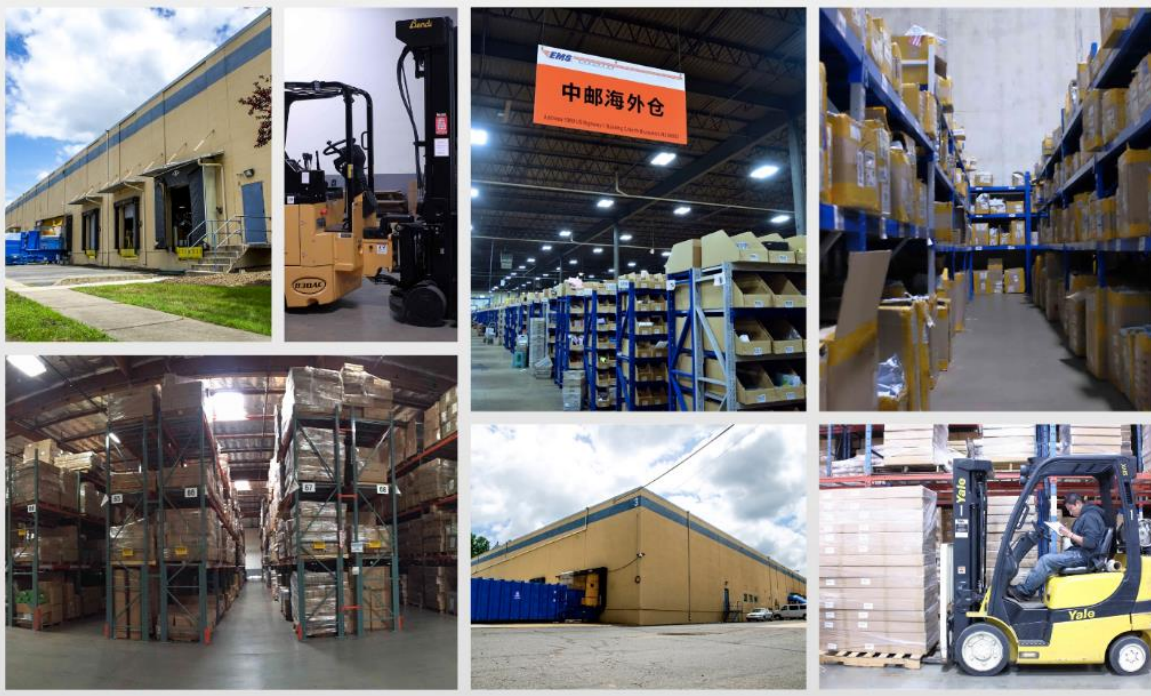


New Jersey



- ◆ Staffing: local team conducts the management, operation and customer service.
- ◆ Warehouse equipment: light duty rack and heavy duty rack, big fork lift truck, lift-type fork lift truck and PC/PDA/scanning devices.
- ◆ Peak Capacity: 35000 piece/per day.
- ◆ Address: 200 Docks Corner Road, Suite 221
Dayton, NJ 08810





Los Angeles

- ◆ Staffing: local team conducts the management, operation and customer service.
- ◆ Warehouse equipment: light duty rack and heavy duty rack, big fork lift truck, lift-type fork lift truck and PC/PDA/scanning devices.
- ◆ Peak Capacity: 20000 piece/per day.
- ◆ Address: Arenth Ave, City of Industry, California 91748





- ◆ Staffing: local team conducts the management, operation and customer service.
- ◆ Warehouse equipment: light duty rack and heavy duty rack, big fork lift truck, lift-type fork lift truck and PC/PDA/scanning devices.
- ◆ Peak Capacity: 5000 piece/per day.



Birmingham



- ◆ Staffing: local team conducts the management, operation and customer service.
- ◆ Warehouse equipment: light duty rack and heavy duty rack, big fork lift truck, lift-type fork lift truck and PC/PDA/scanning devices.
- ◆ Peak Capacity: 5000 piece/per day.

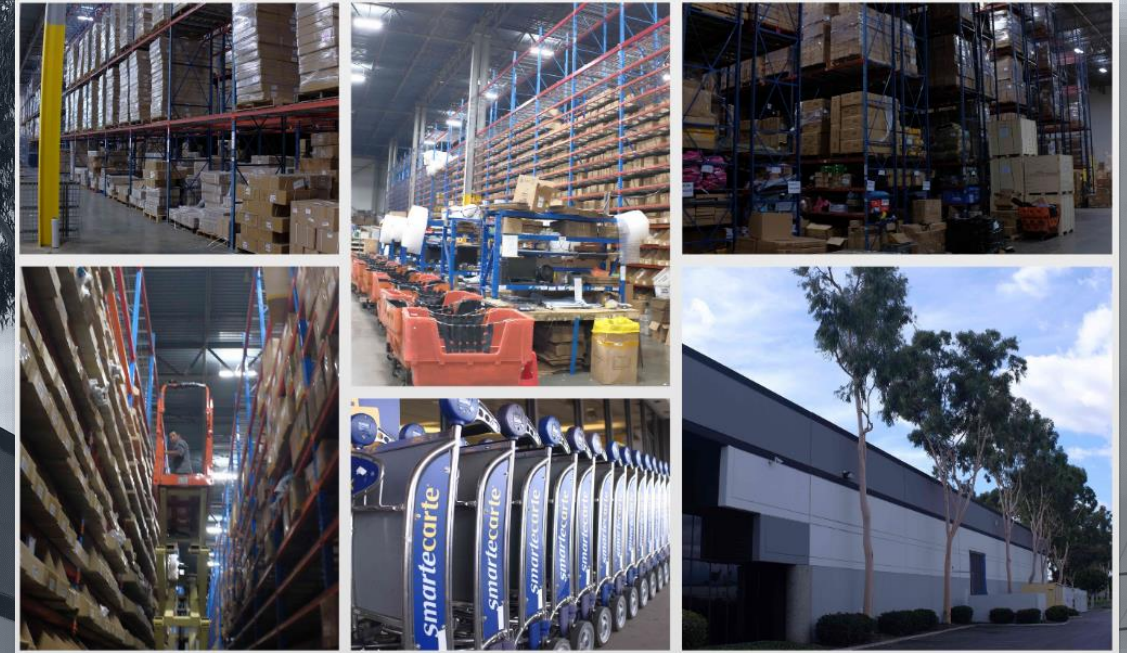


Frankfurt

DE 德购商城
buyGN.COM



- ◆ Staffing: local team conducts the management, operation and customer service.
- ◆ Warehouse equipment: light duty rack and heavy duty rack, big fork lift truck, lift-type fork lift truck and PC/PDA/scanning devices.
- ◆ Peak Capacity: 3000 piece/per day。



Jenec



Melbourne

- ◆ Staffing: local team conducts the management, operation and customer service.
- ◆ Warehouse equipment: light duty rack and heavy duty rack, big fork lift truck, lift-type fork lift truck and PC/PDA/scanning devices.
- ◆ Peak Capacity: 1000 piece/per day.





Delhi



- ◆ Staffing: local team conducts the management, operation and customer service.
- ◆ Warehouse equipment: light duty rack and heavy duty rack, big fork lift truck, lift-type fork lift truck and PC/PDA/scanning devices.
- ◆ Delivery equipment: Over 4,500 trucks and over 1,200 motorcycles
- ◆ The peak processing capacity: 5000 pieces/per day

Why do the cross-border e-commerce sellers choose CPWS?

1. Brand of China Post



- CPWS owns mature management system of law consulting and provides reliable customs clearance in destination country.
- Allocate excellent warehousing resources and professional operation team for the customer and make sure the security of the products.
- Rely on the UPU and integrate the postal service in destination country to supply safe delivery service.

2. Stable order management system



- The system, OMS 3.0 which is developed independently could bring fast and stable experience to customers and help customers to achieve the integrated management of overseas warehouses.
- Provide API and support the connection with customers' information system or other ERPs.

3. High-efficient processing service



- Provide 45 days rent-free period
- After the destination country warehouse receives the order information, the packages will be discharged from the warehouse within 24 hours and be delivered.
- Pay attention to the customers' overseas warehousing experience and provide 7*24 hours customer service to make sure the efficient communication.

4. Expand the deployment plan of overseas warehouses conveniently



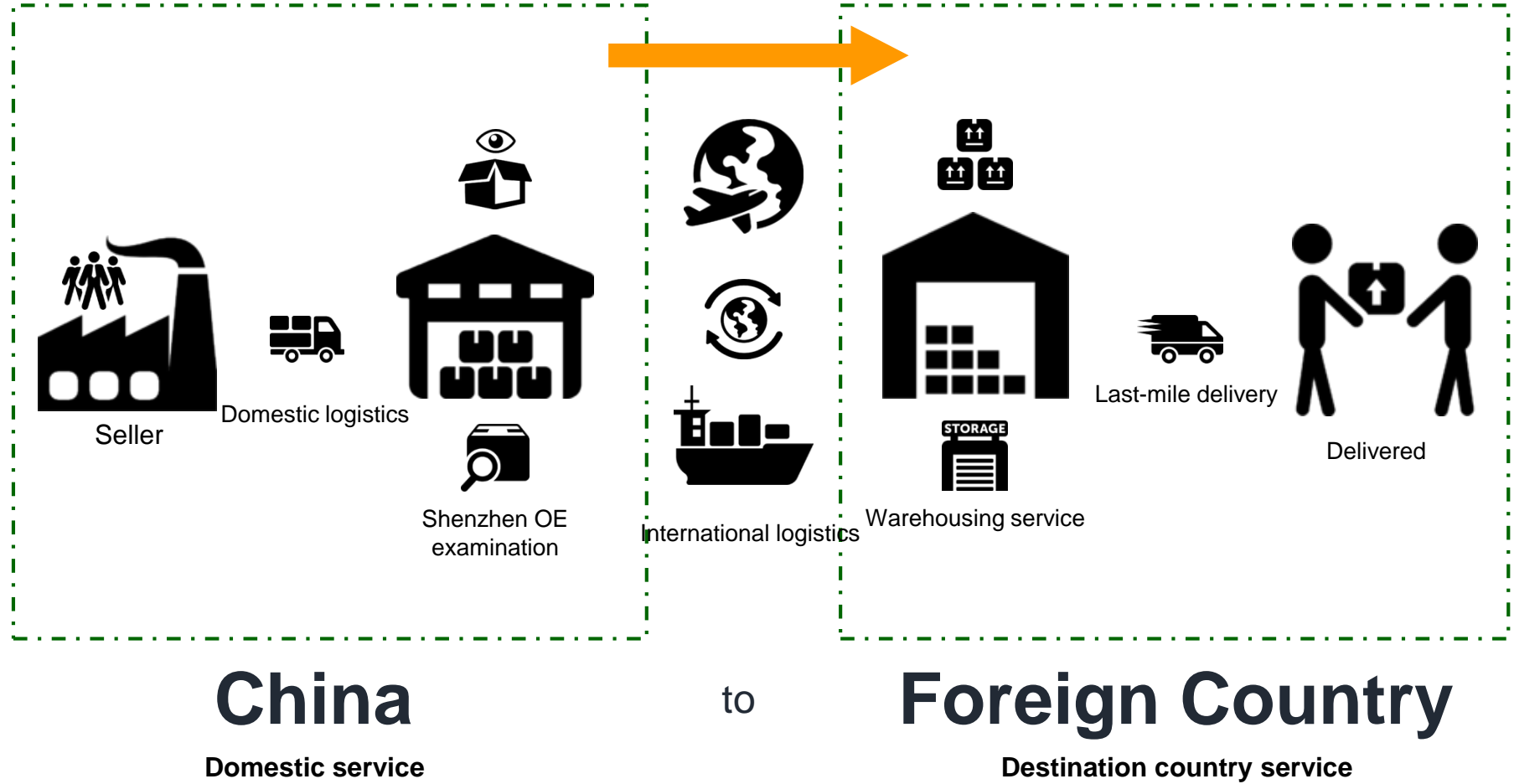
- CPWS helps customers to achieve the plan of building warehouses in the whole world through the EMS branches.
- More and more China Postal warehouses will be put into use.



Process

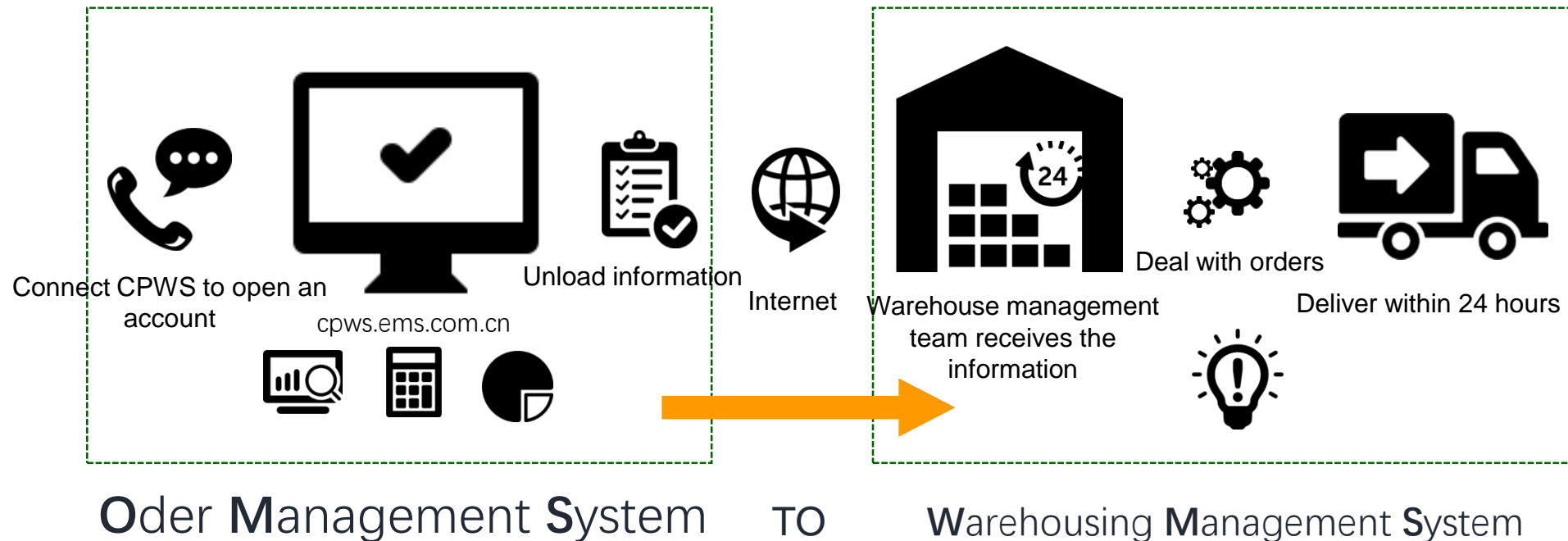
Solid physical distribution

Process of the service provided by CPWS from China to destination country

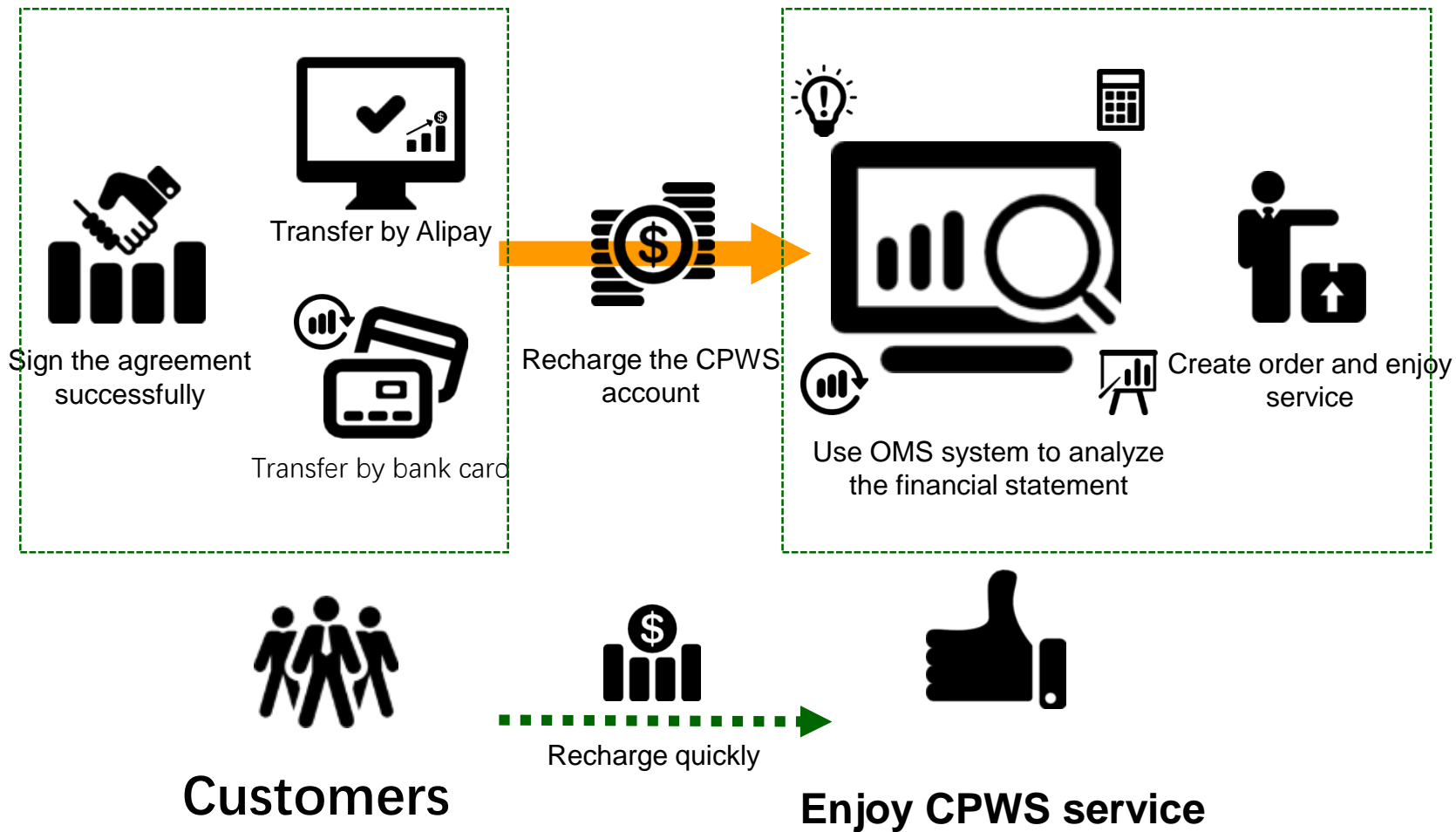


Information flow

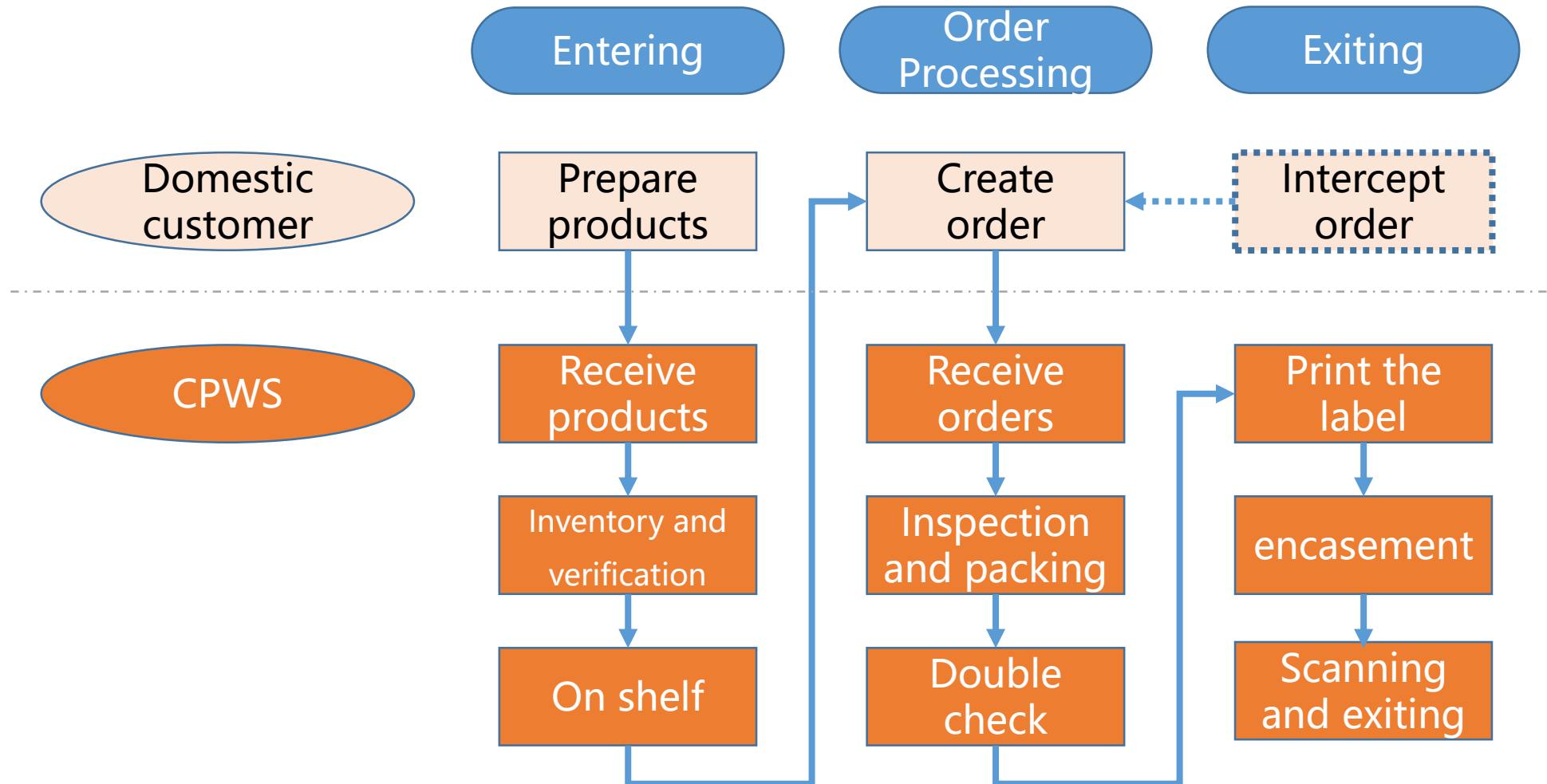
The information process from OMS to WMS



Customers need to recharge the account first to use the service



The Process of Entering and Exiting the Warehouse



Changing and Refunding

return

process

1

If the product is rejected, it will be returned to the warehouse.

✓ Put it on shelf directly

2

The product is returned to the warehouse after customers accept and use it.

✓ Seller creates the order of returning and entering warehouse on the OMS system. Warehouse staff will put the product on shelf after careful examination.

Returns from third-party warehouse are not accepted



Customer Guide

Open System Account

Apply to Open the OMS account

■ Sign an agreement

In order to make sure the service quality, customers should sign a cooperation agreement with our company and then they can open the OMS account. Before signing the agreement, customers should prepare some materials, including:

- The copy of business license (valid)
- The copy of Tax registration certificate
- The copy of Organization Code Certificate
- The copy of ID card of legal representative

After preparing all the material, customers can connect the CPWS customer manager to sign the agreement.

PS: sellers should register the VAT based the requirement of other countries before using CPWS.

■ Registration

Log in cpws.ems.com.cn to register an account



<http://cpws.ems.com.cn/>

* 账户名:

* 密码:

* 确认密码:

* 邮箱:

* 姓名:

* 公司:

手机:

* 区域: -

我们将依照您所在城市，为您分配对应客户经理。

电话:

请填写真实的手机或联系电话，注册后客服人员将在1个工作日内与您取得联系进行信息确认以及开通账户。

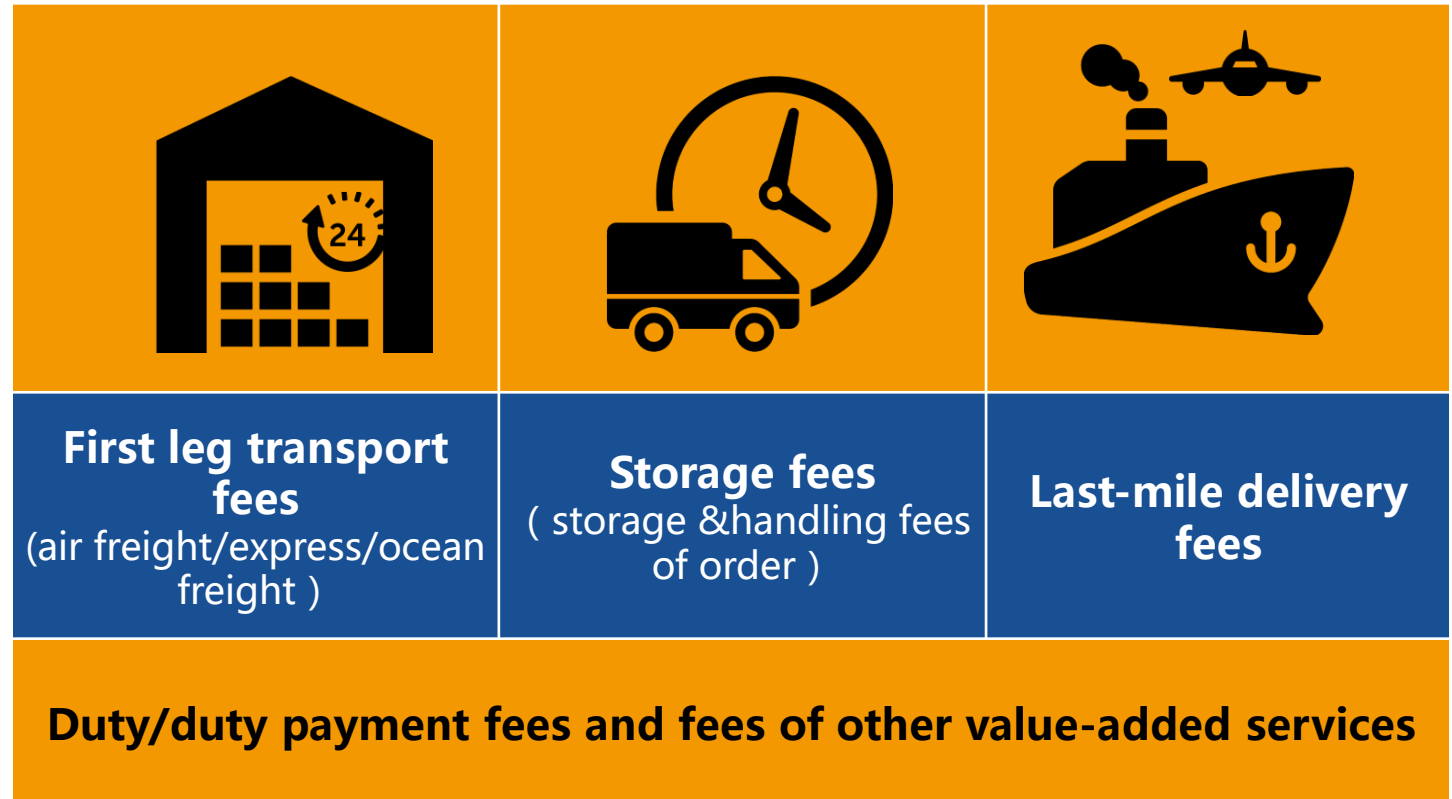
* 验证码: 换一张

确认注册

立即登录

CPWS Fees

- Service expenses include: shipment fee, storage fee and delivery fee
- Based on the clearance demand and customers' special requirement, our company will charge other fees.
- Please contact our customer manager to get the detailed quotation list.





THANK YOU!